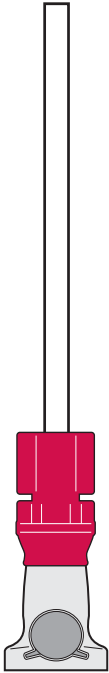




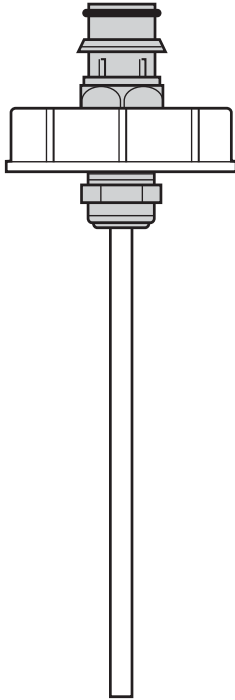
## STEP 1

Confirm you received two parts (A) and (B) and 2 extra O-Rings

Pump Inlet  
"A"



Tank Cap  
"B"



**No Tools Required**

**Throw Away the Old Quick Connect!**

1. Using the old Quick Connect will cause your sink to malfunction.
2. Replace O-Rings when you see signs of wear and tear.
3. Check your quick connects for damage or signs of wear.

**Helpful Tip:**

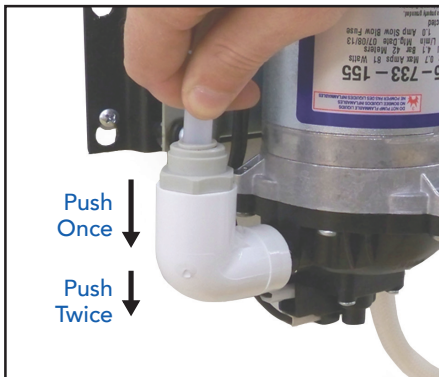
If you pull out the Fresh Water Tank without disconnecting the Quick Connect first, your sink may malfunction. Repeat STEP 4 when this condition happens.

## STEP 2



Turn the Sink OFF. Unplug the sink from the wall outlet before performing any of these steps.

## STEP 4



Push new Pump Inlet tube into white elbow fitting carefully.

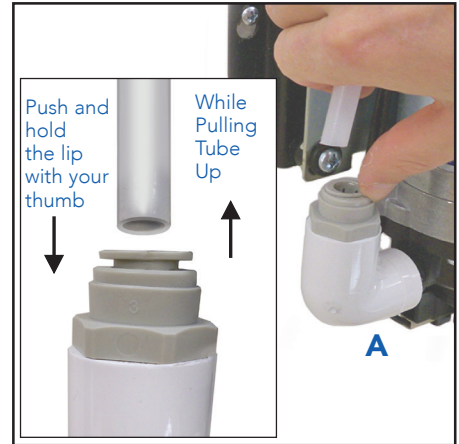
There are two points of resistance; make sure you push in completely.

## STEP 6



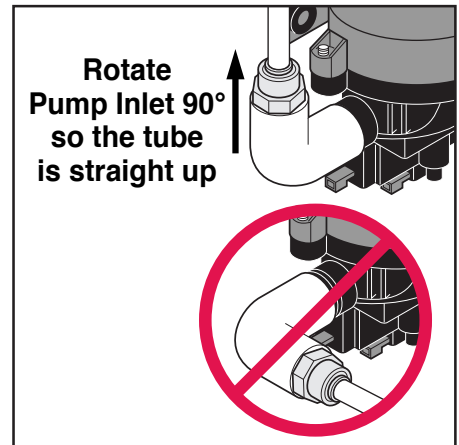
Replace Old Tank Cap with New Tank Cap on Fresh Water Tank.

## STEP 3



Remove old Quick Connect from Pump Connect (A)

## STEP 5



Rotate Pump Inlet Elbow 90° (Tube should be straight up)

## STEP 7



Click it and Try it. Make sure your connections are tight if you experience any sink malfunction.